

CRIME AND SUBSTANCE ABUSE STATISTICS

2001 Community Assessment—Section 6

- **Utah County has lower index crime rates than Utah in all areas, except arson, over the last 10 years.**

Utah County currently has a lower crime rate than the state in all categories of index crimes (aggravated assault, burglary, homicides, larceny/theft, motor vehicle theft, rape, and robbery). Utah County has been lower than the state rate in all index crimes, except arson, for the past 10 years. Arson in Utah County exceeded the state rate in 1991 and again in 1998 (see figures A.1, A.2, B.1 and B.2).

- **Utah County's crime rate trends generally follow those of the state.**

For every crime category, except arson, Utah County's 10-year trend closely resembles that of the state (see figures C.1 to C.8, D.1, D.2 and E).

- **Utah ranks second highest in overall crime rate compared to states with a similar size population.**

When compared to other states with a population size of 1.6 to 2.8 million, Utah ranks second, behind New Mexico, in highest crime rate per 1,000 people. Compared to the 13 other western states, Utah ranks fifth in highest crime rate per 1,000 people (see figures F and G).

- **Index crime in Utah County decreased for aggravated assault, larceny/theft, motor vehicle theft, and rape between 1999 and 2000.**

Overall crime in Utah County has decreased over the last ten years. This trend follows the state and nationwide trend of decreasing crime over the last decade (see figures C.1 to C.8 and E). The total crime rate decreased from 37.05 in 1999 to 33.41 in 2000 (see figures D.1 and D.2).

- **Utah County has a relatively low incidence of child abuse compared to other counties in Utah.**

Although it is the second largest county in Utah, Utah County ranked eighth in lowest substantiated child abuse reports for 1999. Compared to the state's four most populated counties, Utah County ranks second for lowest substantiated child abuse reports (see figures H.1 and H.2).

- **Substance abuse and alcohol treatment admissions in Utah County have increased for all age groups (except 65 and older) from 1998 to 1999.**

All age groups, except 65 and older, experienced at least a 43% increase in treatment admissions from 1998 to 1999. The largest increase was seen in the 18 to 24 age group with a 120% increase in admissions between 1998 to 1999 (see figures I.1, I.2, I.3, and I.4).

Statewide, Utah substance abuse and alcohol admissions have remained fairly stable, with a slight increase in most age groups between 1998 and 1999 (see figures J.1, J.2, J.3, and J.4).

- **Total treatment admissions in Utah County are up for all substances.**

Total treatment admissions for substance abuse increased 90% from 1998 to 1999. The smallest increase was for methamphetamines, at 23%. The largest increase was for heroin, at 160% (see figures K.1 to K.4).

The State of Utah also saw increases for all substances except for a decrease in the number of treatment admissions for cocaine (see figures L.1 and L.2).

Nationwide trends indicate a slight increase for all substances except for a decrease in the number of treatment admissions for heroin (see figures M.1 and M.2).

Figure A.1 Utah County Index Crime Numbers (1991 to 2000)

Year	Aggravated		Burglary	Homicide	Larceny/ Car		Rape	Robbery	Total
	Assault	Arsons			Theft	Theft			
1991	234	100	1,260	1	8,626	391	106	32	10,750
1992	219	80	1,543	3	9,304	345	88	46	11,628
1993	243	56	1,473	3	8,130	417	77	40	10,439
1994	279	70	1,731	2	8,929	534	84	52	11,681
1995	312	45	1,690	0	10,799	593	77	45	13,561
1996	312	16	1,827	3	10,647	617	103	51	13,576
1997	343	51	2,355	4	10,696	798	114	72	14,433
1998	268	77	1,443	6	10,448	591	111	63	13,007
1999	261	29	1,594	1	10,190	660	118	46	12,899
2000	192	47	1,642	2	9,766	500	108	54	12,311

Utah Department of Public Safety, Bureau of Criminal Identification (2001). *Crime in Utah* [1990 through 2000].
Salt Lake City, Utah: Author.

Figure A.2 Utah County Index Crime Trends (1991 to 2000)

Year	Aggravated		Burglary	Homicide	Larceny/ Car		Rape	Robbery	Total
	Assault	Arsons			Theft	Theft			
1991	0.86	0.37	4.65	0.00	31.85	1.44	0.39	0.12	39.68
1992	0.79	0.29	5.56	0.01	33.54	1.24	0.32	0.17	41.92
1993	0.85	0.20	5.13	0.01	28.34	1.45	0.27	0.14	36.39
1994	0.90	0.23	5.59	0.01	28.82	1.72	0.27	0.17	37.71
1995	1.04	0.15	5.63	0.00	36.00	1.98	0.26	0.15	45.21
1996	0.98	0.05	5.74	0.01	33.43	1.94	0.32	0.16	42.63
1997	1.03	0.15	7.10	0.01	32.35	2.41	0.34	0.22	43.61
1998	0.78	0.23	4.22	0.02	30.59	1.73	0.32	0.18	38.07
1999	0.75	0.08	4.58	0.00	29.27	1.90	0.34	0.13	37.05
2000	0.52	0.13	4.46	0.01	26.50	1.36	0.29	0.15	33.42

Note: Crime rate is per 1,000 people

Utah Department of Public Safety, Bureau of Criminal Identification (2001). *Crime in Utah* [1990 through 2000].
Salt Lake City, Utah: Author.

Figure B.1 Utah Index Crime Numbers (1991 to 2000)

Year	Aggravated				Larceny/ Theft	Car		Rape	Robbery	Total
	Assault	Arsons	Burglary	Homicide		Theft	Theft			
1991	3,169	496	14,487	51	73,339	4,168	788	966	97,464	
1992	3,345	517	15,759	51	75,889	4,257	806	1,012	101,636	
1993	3,590	409	14,474	53	71,516	4,438	806	1,095	96,381	
1994	3,636	494	14,776	53	73,255	6,520	786	1,203	100,723	
1995	40,661	430	15,347	59	85,257	7,362	803	1,277	151,196	
1996	4,215	338	16,427	60	84,835	8,339	810	1,342	116,366	
1997	4,379	352	18,118	55	86,840	8,979	939	1,393	121,055	
1998	4,058	412	15,171	60	80,071	7,188	852	1,373	109,185	
1999	3,763	356	13,655	43	76,278	6,961	796	1,141	102,993	
2000	3,239	295	12,692	43	67,313	5,640	838	1,190	91,277	

Utah Department of Public Safety, Bureau of Criminal Identification (2001). *Are the crime rates going up or down?* [Electronic Format]: Crime in Utah 2000. Retrieved July 30, 2001 from <http://www.bci.ps.state.ut.us/crimebook/CIU99/ciu.htm>

Figure B.2 Utah Index Crime Rates per 1,000 People (1991 to 2000)

Year	Aggravated				Larceny/ Theft	Car		Rape	Robbery	Total
	Assault	Arsons	Burglary	Homicide		Theft	Theft			
1991	1.79	0.28	8.18	0.03	41.43	2.35	0.45	0.55	55.06	
1992	1.85	0.29	8.70	0.03	41.86	2.35	0.44	0.56	56.08	
1993	1.94	0.22	7.82	0.03	38.62	2.40	0.44	0.59	52.06	
1994	1.89	0.26	7.70	0.03	38.17	3.40	0.41	0.63	52.49	
1995	2.06	0.22	7.77	0.03	43.30	3.73	0.41	0.65	58.17	
1996	2.05	0.16	7.99	0.03	41.29	4.06	0.39	0.65	56.62	
1997	2.05	0.17	8.50	0.03	40.73	4.21	0.44	0.65	56.78	
1998	1.87	0.19	7.00	0.03	36.93	3.32	0.39	0.63	50.36	
1999	1.71	0.16	6.20	0.02	34.63	3.16	0.36	0.52	46.76	
2000	1.45	0.13	5.68	0.02	30.14	2.53	0.38	0.53	40.86	

Note: Crime rate is per 1,000 people

Utah Department of Public Safety, Bureau of Criminal Identification (2001). *Are the crime rates going up or down?* [Electronic Format]: Crime in Utah 2000. Retrieved July 30, 2001 from <http://www.bci.ps.state.ut.us/crimebook/CIU99/ciu.htm>

Figure C.1 Utah County and Utah Aggravated Assault Trends (1990 to 2000)

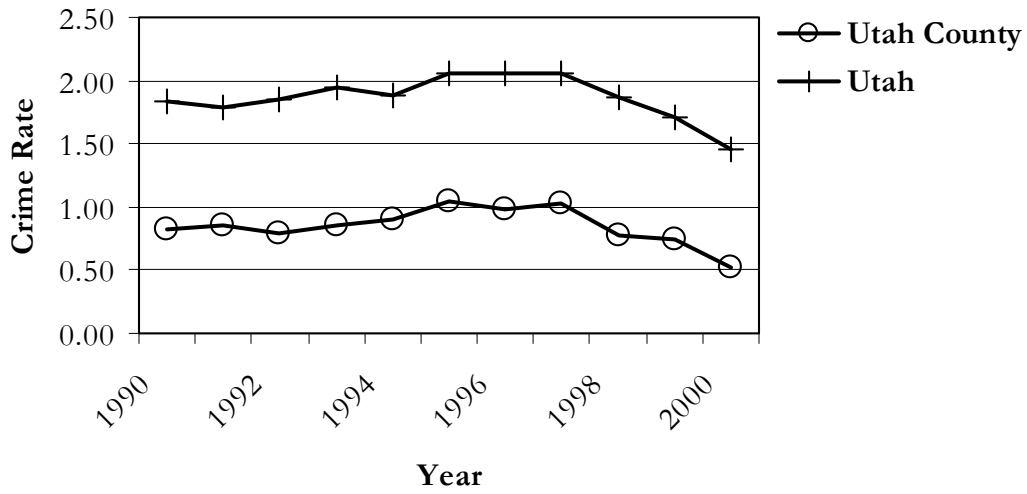


Figure C.2 Utah County and Utah Arson Trends (1990 to 2000)

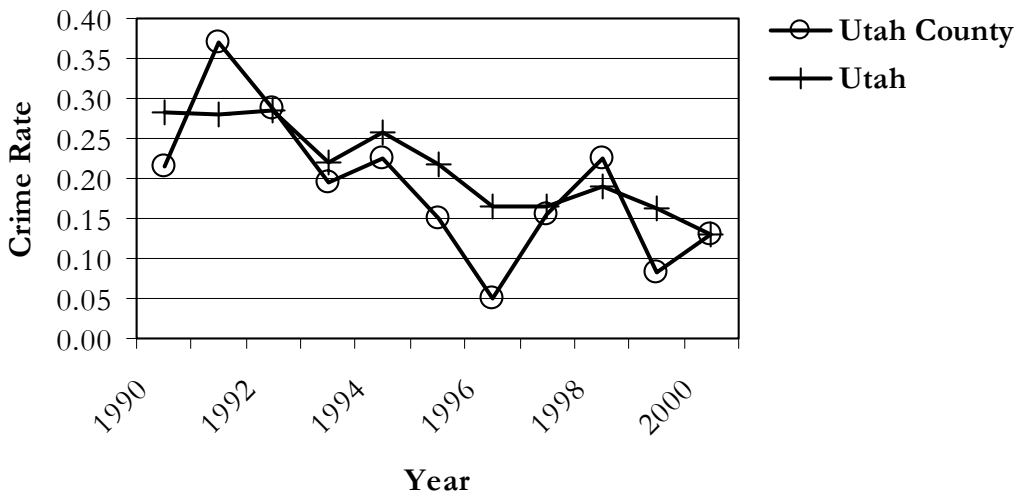


Figure C.3 Utah County and Utah Burglary Trends (1990 to 2000)

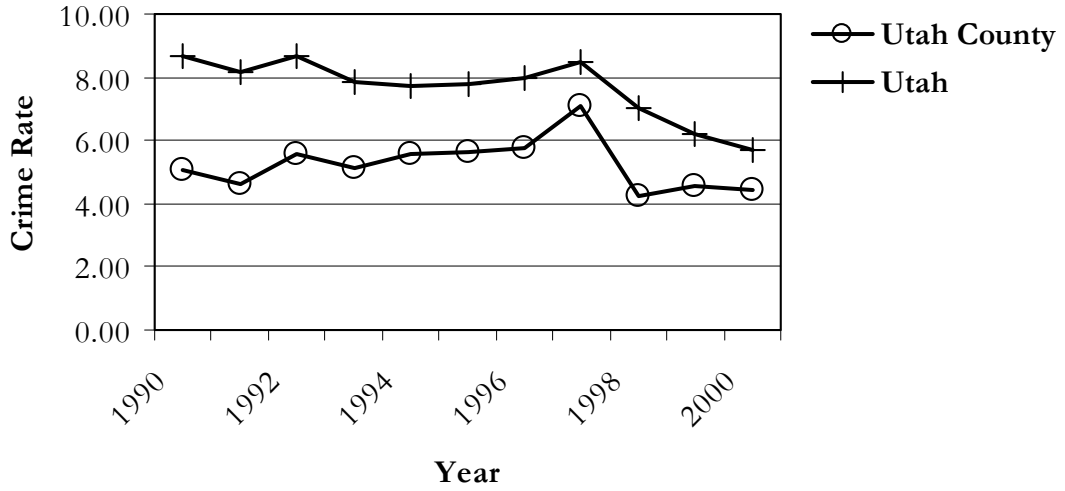


Figure C.4 Utah County and Utah Homicide Trends (1990 to 2000)

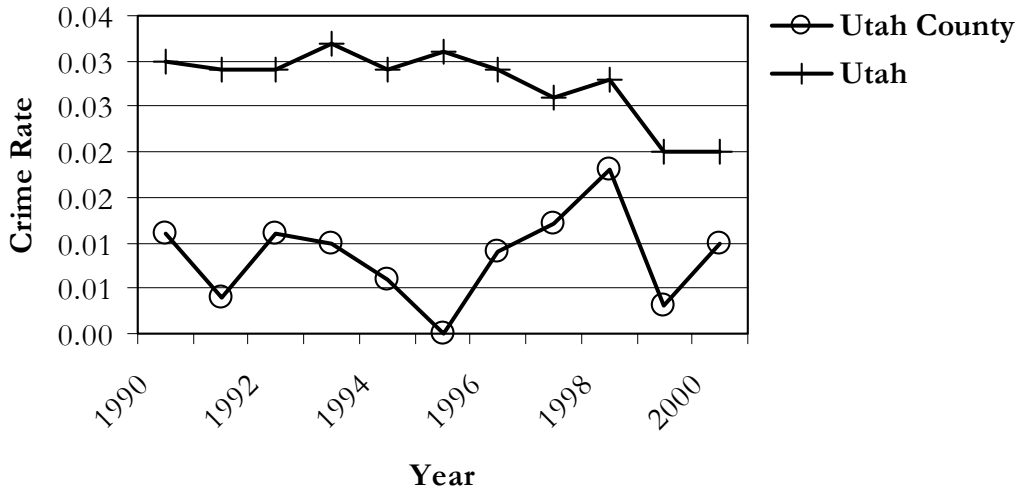


Figure C.5 Utah County and Utah Larceny/Theft Trends (1990 to 2000)

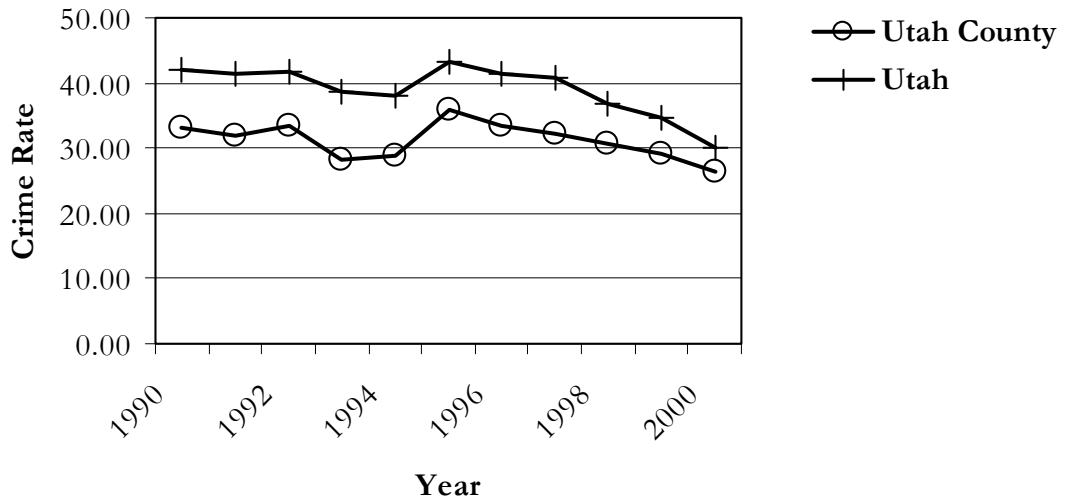


Figure C.6 Utah County and Utah Motor Vehicle Theft Trends (1990 to 2000)

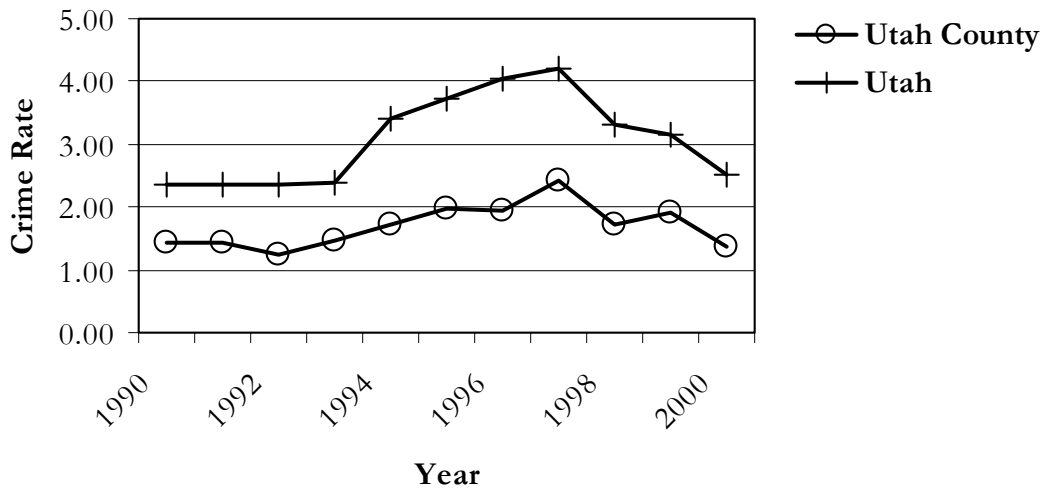


Figure C.7 Utah County and Utah Rape Crime Trends (1990 to 2000)

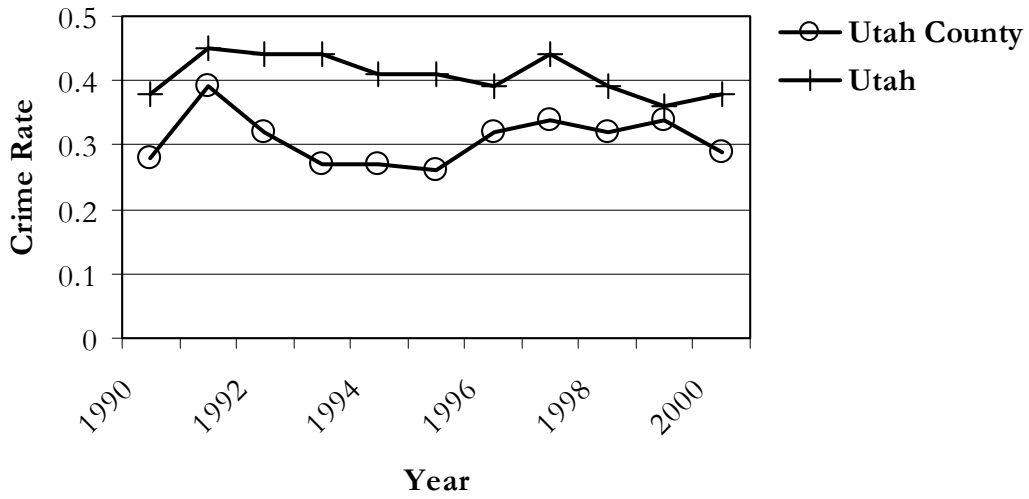


Figure C.8 Utah County and Utah Robbery Trends (1990 to 2000)

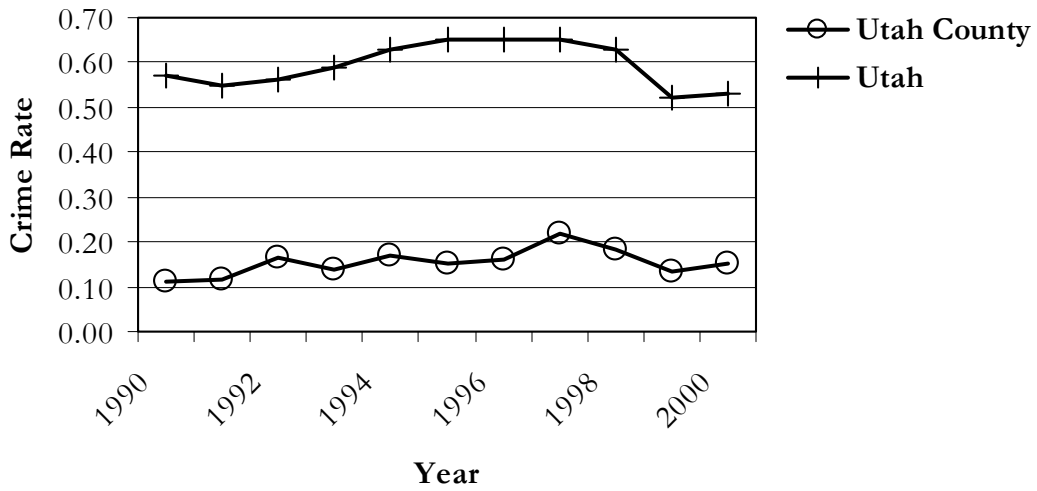


Figure D.1 Total Crime Rate Comparison (1990 to 2000)

Year	Utah County	State of Utah
1990	41.09	56.15
1991	39.70	55.06
1992	41.92	56.07
1993	36.39	52.04
1994	37.70	52.48
1995	45.21	58.15
1996	42.63	56.63
1997	43.52	56.77
1998	38.07	50.36
1999	37.05	46.76
2000	33.41	40.87

Utah Department of Public Safety, Bureau of Criminal Identification (2001). *Crime in Utah* [1989 through 1999]. Salt Lake City, Utah: Author.

Utah Department of Public Safety, Bureau of Criminal Identification (2001). *Are the crime rates going up or down?* [Electronic Format]: Crime in Utah 2000. Retrieved July 30, 2001 from <http://www.bci.ps.state.ut.us/crimebook/CIU99/ciu.htm>

Figure D.2 Total Crime Rate Trends (1990 to 2000)

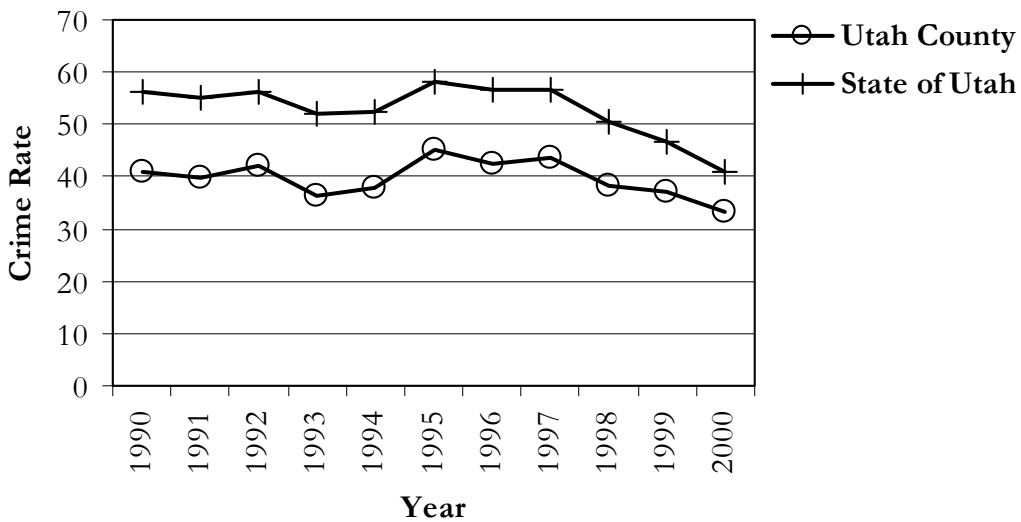


Figure E.1 Index Crimes by Agencies in Utah County (2000)

Agency	Homicide	Rape	Robbery	Aggravated			Car	
				Assault	Burglary	Theft	Theft	Arson
Utah County Sheriff	0	5	0	15	45	106	12	1
Alpine/Highland PD	0	1	1	5	44	154	5	0
American Fork PD	0	4	1	26	94	636	47	0
BYU PD	0	0	0	1	6	281	1	0
Lehi PD	0	0	2	10	83	189	27	4
Mapleton PD	0	0	0	2	26	64	3	0
Orem PD	1	26	10	25	332	2,919	170	3
Payson PD	0	6	0	6	68	255	18	0
Pleasant Grove/Lindon PD	0	5	3	15	68	609	40	0
Provo PD	0	45	26	58	550	2,957	134	37
Salem/Woodland Hills PD	0	0	1	2	23	66	0	0
Santaquin/Genola PD	0	0	3	1	15	36	0	0
Spanish Fork PD	0	10	3	6	133	756	17	0
Springville PD	1	6	4	19	146	629	24	2
Utah County Major Crimes Task Force (11 months)	0	0	0	1	5	11	1	0
Utah Valley State College PD	0	0	0	0	4	98	1	0
Total - Utah County	2	108	54	192	1,642	9,766	500	47

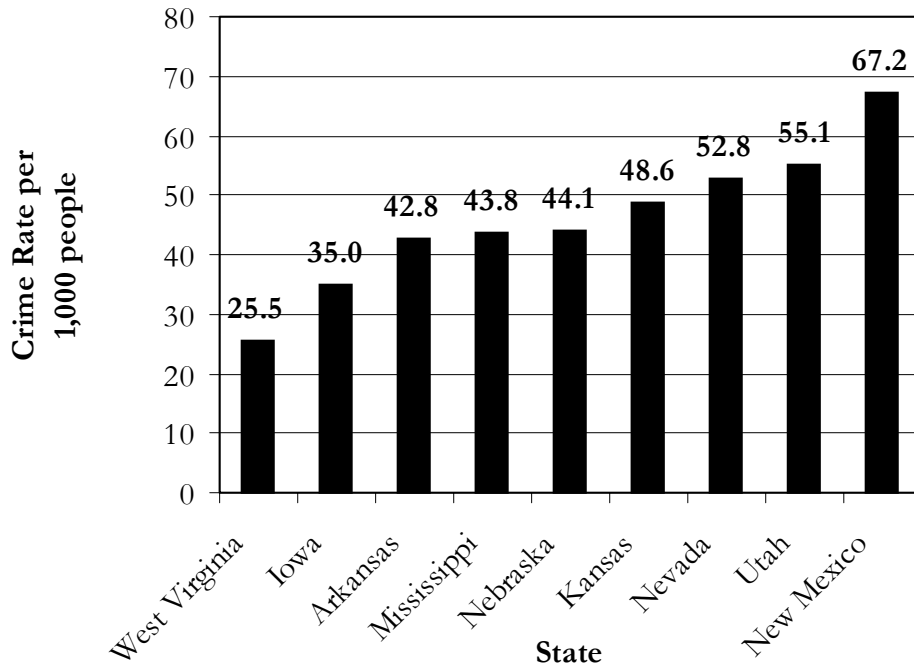
Utah Department of Public Safety, Bureau of Criminal Identification (2001). *View the 2000 crime rate for: Alpine/Highland PD* [Electronic Format]: Crime in Utah 2000. Retrieved July 30, 2001 from <http://www.bci.ps.state.ut.us/crimebook/CIU99/ciu.htm>

Figure E.2 Total Index Crimes and Rates by Agencies in Utah County (2000)

Agency	Population	Total Crime Index	Crime Rate per 1,000 people
Utah County Sheriff	20,621	184	8.92
Alpine/Highland PD	15,318	210	13.71
American Fork PD	21,941	808	36.83
BYU PD	-	289	-
Lehi PD	19,028	315	16.55
Mapleton PD	5,809	95	16.35
Orem PD	84,324	3,486	41.34
Payson PD	12,716	353	27.76
Pleasant Grove/Lindon PD	31,831	740	23.25
Provo PD	105,166	3,807	36.2
Salem/Woodland Hills PD	5,313	92	17.32
Santaquin/Genola PD	5,799	55	9.48
Spanish Fork PD	20,246	925	45.69
Springville PD	20,424	831	40.69
Utah County Major Crimes Ta	-	18	-
Utah Valley State College PD	-	103	-
Total - Utah County	368,536	12,311	33.41

Utah Department of Public Safety, Bureau of Criminal Identification (2001). *View the 2000 crime rate for: Alpine/Highland PD* [Electronic Format]: Crime in Utah 2000. Retrieved July 30, 2001 from <http://www.bci.ps.state.ut.us/crimebook/CIU99/ciu.htm>

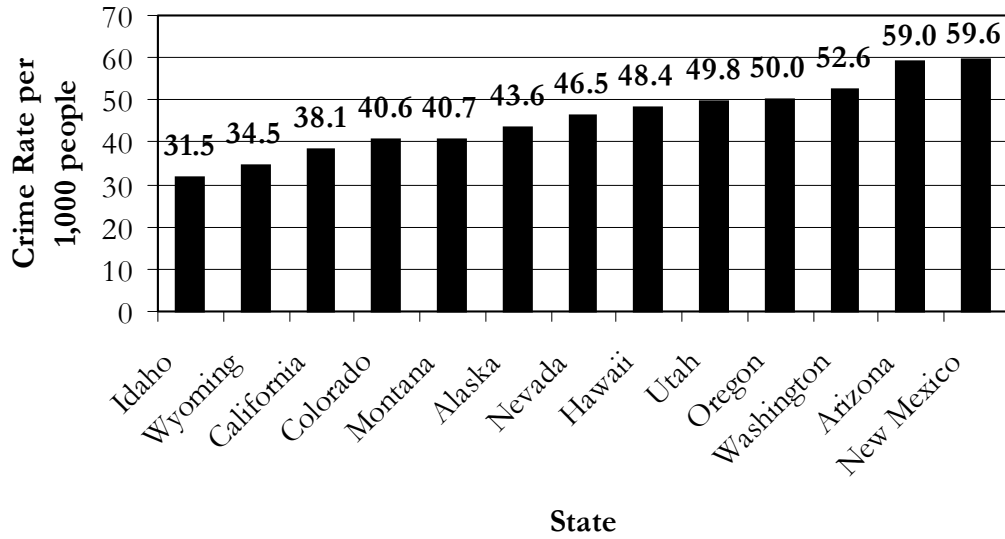
Figure F Utah in Comparison to States with Similar Populations (1998)



Note: "Index Crimes" include: homicide, rape, robbery, aggravated assault, burglary, larceny/theft, motor vehicle theft, and arson.

Utah Department of Public Safety, Bureau of Criminal Identification (2001). *Utah compared to states of similar size population: Utah Compared to the Nation*. Retrieved May 30, 2001 from <http://www.bci.ps.state.ut.us/crimebook/CIU99/ciu.htm>

Figure G Western States Crime Rate Comparison (1998)



Note: "Index Crimes" are the offenses of homicide, rape, robbery, aggravated assault, burglary, larceny/theft, motor vehicle theft, and arson. However, arson data is not available for this comparison, and is therefore not included in this graph.

Utah Department of Public Safety, Bureau of Criminal Identification (2001). *Utah compared to western states:*

Utah Compared to the Nation. Retrieved May 30, 2001 from

<http://www.bci.ps.state.ut.us/crimebook/CIU99/ciu.htm>

Figure H.1 Child Abuse and Neglect Rates (1996 to 2000 Average)

Area	Total Victims	Average Annual Victims	Average Annual rate per 1000	Rank
Beaver County	139	27.8	14.6	21
Box Elder County	628	125.6	8.7	10
Cache County	633	126.6	4.1	4
Carbon County	839	167.8	25.8	28
Daggett County	2	0.4	1.8	2
Davis County	2,949	589.8	7.6	7
Duchesne County	380	76.0	15.2	22
Emery County	225	45.0	12.1	16
Garfield County	68	13.6	9.9	12
Grand County	364	72.8	27.7	29
Iron County	713	142.6	14.2	20
Juab County	122	24.4	9.6	11
Kane County	150	30.0	15.2	22
Millard County	251	50.2	11.6	15
Morgan County	37	7.4	3.4	3
Piute County	21	4.2	10.0	13
Rich County	5	1.0	1.6	1
Salt Lake County	16,785	3357.0	12.3	17
San Juan County	413	82.6	16.5	25
Sanpete County	437	87.4	13.0	18
Sevier County	605	121.0	20.4	27
Summit County	228	45.6	6.2	5
Tooele County	716	143.2	13.8	19
Uintah County	634	126.8	15.2	22
Utah County	4,636	927.2	7.7	8
Wasatch County	144	28.8	6.5	6
Washington County	1,022	204.4	8.5	9
Wayne County	40	8.0	10.4	14
Weber County	5,057	1,011.4	17.5	26

Note: Abuse victims are ages 0 to 17 years old.

Utah Children (2001). *Measures of Child Well-Being in Utah 2001*. Salt Lake City, Utah: Author.

Figure H.2 Child Abuse and Neglect Rates (1996 to 2000)

Area	Abuse & Neglect rates per 1,000 children	Rank
Davis County	7.6	1
Utah County	7.7	2
Salt Lake County	12.3	3
Weber County	17.5	4

Utah Children (2001). *Measures of Child Well-Being in Utah 2001*.
Salt Lake City, Utah: Author.

Figure I.1 Total Treatment Admissions in Utah County (1991 to 1999)

Age Group	1991	1992	1993	1994	1995	1996	1997	1998	1999
Under 18	164	89	173	81	95	109	89	102	200
18 to 24	31	120	246	299	442	299	244	221	341
25 to 34	47	197	325	447	428	399	258	244	359
35 to 64	19	154	251	365	347	274	194	207	297
65 and over	0	4	2	3	3	8	2	0	0
Total	261	564	997	1,195	1,315	1,089	787	774	1,197

Utah State Division of Substance Abuse (2001). *Utah County TEDS trend data.*

Retrieved May 25, 2001 from http://www.utahdsa.com/Utah_CO_TEDS.htm

Figure I.2 Difference in Total Number of Admissions in Utah County (1991 to 1999)

Age Group	1991	1992	1993	1994	1995	1996	1997	1998	1999
Under 18	-	-75	84	-92	14	14	-20	13	98
18 to 24	-	89	126	53	143	-143	-55	-23	120
25 to 34	-	150	128	122	-19	-29	-141	-14	115
35 to 64	-	135	97	114	-18	-73	-80	13	90
65 and over	-	4	-2	1	0	5	-6	-2	0
Total		303	433	198	120	-226	-302	-13	423

Utah State Division of Substance Abuse (2001). *Utah County TEDS trend data.*

Retrieved May 25, 2001 from http://www.utahdsa.com/Utah_CO_TEDS.htm

Figure I.3 Percent Change in Admissions in Utah County (1991 to 1999)

Age Group	1991	1992	1993	1994	1995	1996	1997	1998	1999
Under 18	-	-46%	94%	-53%	17%	15%	-18%	15%	96%
18 to 24	-	287%	105%	22%	48%	-32%	-18%	-9%	54%
25 to 34	-	319%	65%	38%	-4%	-7%	-35%	-5%	47%
35 to 64	-	711%	63%	45%	-5%	-21%	-29%	7%	43%
65 and over	-	400%	-50%	50%	0%	167%	-75%	-100%	0%
Total		116%	77%	20%	10%	-17%	-28%	-2%	55%

Utah State Division of Substance Abuse (2001). *Utah County TEDS trend data.*

Retrieved May 25, 2001 from http://www.utahdsa.com/Utah_CO_TEDS.htm

Figure I.4 Admission Trends in Utah County (1991 to 1999)

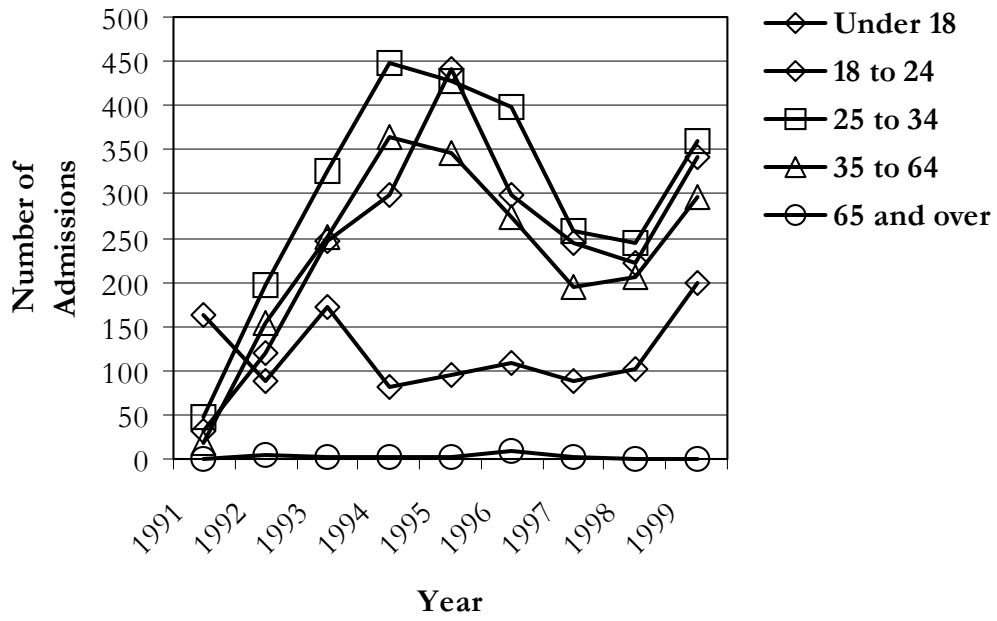


Figure J.1 Statewide Substance Abuse Treatment Admissions (1991 to 1999)

Age Group	1991	1992	1993	1994	1995	1996	1997	1998	1999
Under 18	813	1,190	1,390	1,238	1,242	1,507	1,972	2,272	2,423
18-24	1,967	2,065	2,041	2,381	2,695	3,102	3,047	3,050	3,211
25-34	4,758	4,830	4,368	5,315	5,090	5,346	5,013	4,567	4,554
35-64	6,357	6,281	5,674	7,429	6,062	5,732	5,967	5,735	6,441
65+	109	132	124	133	95	95	64	50	64
Total	14,004	14,498	13,597	16,496	15,184	15,782	16,063	15,674	16,693

Utah State Division of Substance Abuse (2001). *State wide TEDS trend data set*. Retrieved May 25, 2001 from http://www.utahdsa.com/StateW_TEDS.htm

Figure J.2 Difference in Statewide Treatment Admissions (1991 to 1999)

Age Group	1991	1992	1993	1994	1995	1996	1997	1998	1999
Under 18	-	377	200	-152	4	265	465	300	151
18-24	-	98	-24	340	314	407	-55	3	161
25-34	-	72	-462	947	-225	256	-333	-446	-13
35-64	-	-76	-607	1,755	-1,367	-330	235	-232	706
65+	-	23	-8	9	-38	0	-31	-14	14
Total		494	-901	2,899	-1,312	598	281	-389	1,019

Utah State Division of Substance Abuse (2001). *State wide TEDS trend data set*. Retrieved May 25, 2001 from http://www.utahdsa.com/StateW_TEDS.htm

Figure J.3 Percentage Change in Treatment Admissions Statewide (1991 to 1999)

Age Group	1991	1992	1993	1994	1995	1996	1997	1998	1999
Under 18	-	46%	17%	-11%	0%	21%	31%	15%	7%
18-24	-	5%	-1%	17%	13%	15%	-2%	0%	5%
25-34	-	2%	-10%	22%	-4%	5%	-6%	-9%	0%
35-64	-	-1%	-10%	31%	-18%	-5%	4%	-4%	12%
65+	-	21%	-6%	7%	-29%	0%	-33%	-22%	28%
Total		4%	-6%	21%	-8%	4%	2%	-2%	7%

Utah State Division of Substance Abuse (2001). *State wide TEDS trend data set*. Retrieved May 25, 2001 from http://www.utahdsa.com/StateW_TEDS.htm

Figure J.4 Statewide Treatment Admission Trends (1991 to 1999)

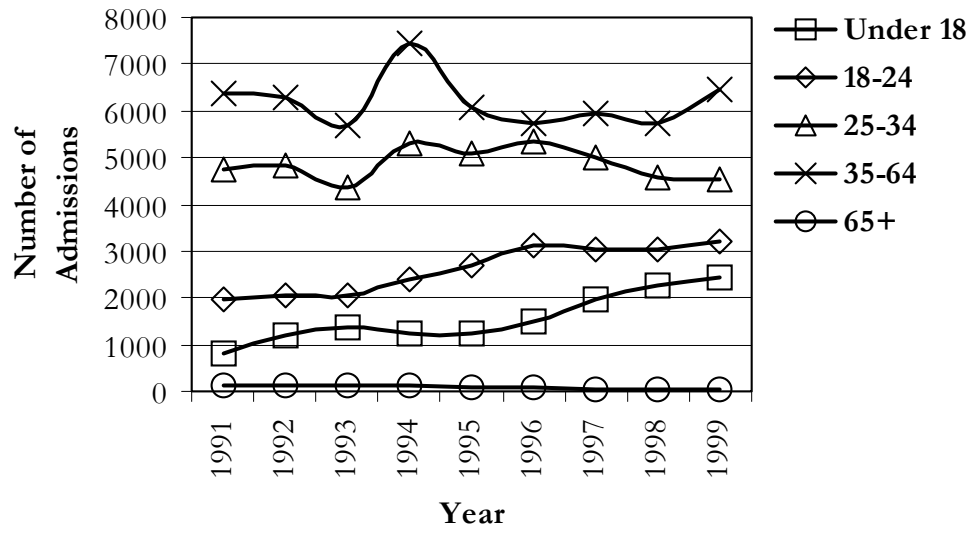


Figure K.1 Treatment Admissions by Substance in Utah County (1991 to 1999)

Substance	1991	1992	1993	1994	1995	1996	1997	1998	1999
Cocaine/Crack	5	36	51	93	161	101	78	48	66
Marijuana/Hashish	47	55	146	179	235	305	189	183	347
Heroin	1	3	11	39	67	80	67	42	109
Methamphetamines	1	4	3	23	183	132	136	196	241
Total	54	98	211	334	646	618	470	469	763

The Utah State Division of Substance Abuse (2001). *Utah County TEDS trend data* [Electronic Format]. Retrieved May 25, 2001 from http://www.utahdsa.com/UtahCO_TEDS_All.htm

Figure K.2 Difference in Total Substance Admissions in Utah County (1991 to 1999)

Substance	1991	1992	1993	1994	1995	1996	1997	1998	1999
Cocaine/Crack	-	31	15	42	68	-60	-23	-30	18
Marijuana/Hashish	-	8	91	33	56	70	-116	-6	164
Heroin	-	2	8	28	28	13	-13	-25	67
Methamphetamines	-	3	-1	20	160	-51	4	60	45
Total		303	436	197	119	-221	-303	-18	423

The Utah State Division of Substance Abuse (2001). *Utah County TEDS trend data* [Electronic Format]. Retrieved May 25, 2001 from http://www.utahdsa.com/UtahCO_TEDS_All.htm

Figure K.3 Percentage Change in Substance Admissions in Utah County (1991 to 1999)

Substance	1991	1992	1993	1994	1995	1996	1997	1998	1999
Cocaine/Crack	-	620%	42%	82%	73%	-37%	-23%	-38%	38%
Marijuana/Hashish	-	17%	165%	23%	31%	30%	-38%	-3%	90%
Heroin	-	200%	267%	255%	72%	19%	-16%	-37%	160%
Methamphetamines	-	300%	-25%	667%	696%	-28%	3%	44%	23%
Total		561%	445%	93%	36%	-34%	-49%	-4%	90%

The Utah State Division of Substance Abuse (2001). *Utah County TEDS trend data* [Electronic Format]. Retrieved May 25, 2001 from http://www.utahdsa.com/UtahCO_TEDS_All.htm

Figure K.4 Total Substance Admission Trends for Utah County (1991 to 1999)

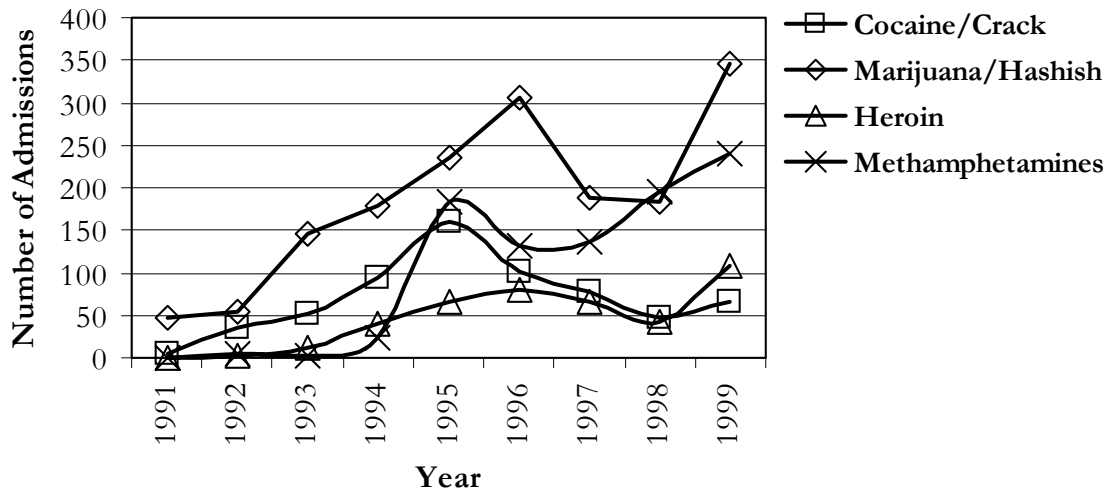


Figure L.1 Total Statewide Treatment Admissions, by Substance (1991 to 1999)

Substance	1991	1992	1993	1994	1995	1996	1997	1998	1999
Cocaine/Crack	650	985	1,186	1,773	1,843	1,806	2,238	1,657	1,529
Marijuana/Hashish	533	695	1,160	1,566	1,800	2,442	2,705	2,924	3,321
Heroin	279	317	346	640	867	1,103	1,524	1,298	1,438
Methamphetamine	58	63	132	346	1,344	1,538	1,992	2,702	2,882
Total	1,520	2,060	2,824	4,325	5,854	6,889	8,459	8,581	9,170

Utah State Division of Substance Abuse (2000). *State wide TEDS trend data*. Retrieved May 25, 2001 from http://www.utahdsa.com/StateW_DrugTrend.htm

Figure L.2 Total Admission Trends for the State, by Substance (1991 to 1999)

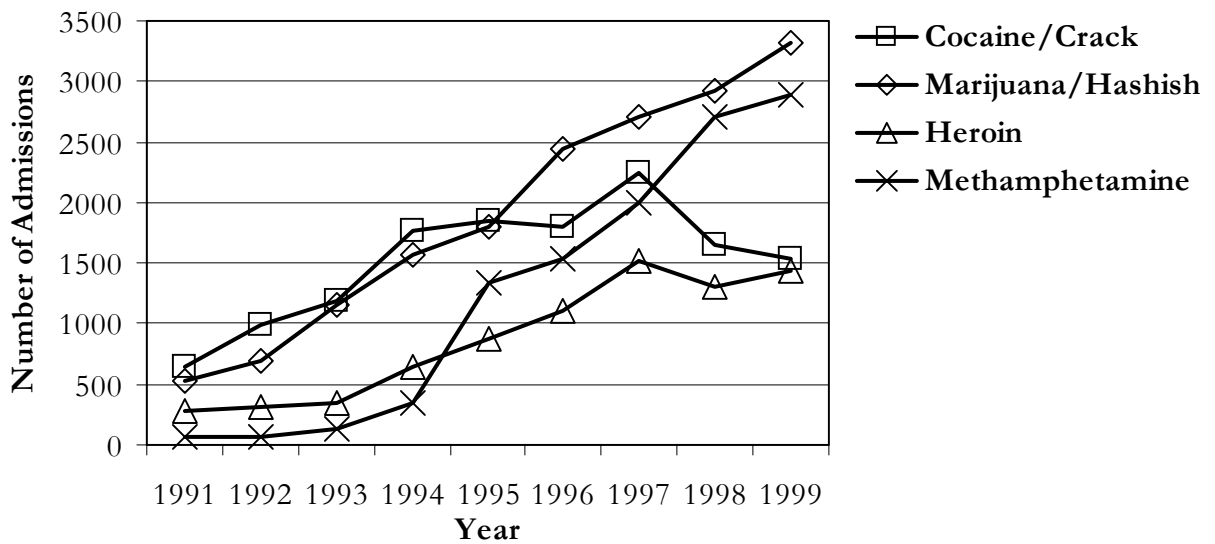


Figure M.1 Nationwide Treatment Admissions, by Substance (1993 to 1998)

Substance	1993	1994	1995	1996	1997	1998
Cocaine	277,076	293,666	272,286	256,920	230,129	233,493
Marijuana/Hashish	111,265	139,670	170,974	192,103	198,079	208,671
Heroin	206,865	231,674	236,613	232,242	236,055	233,507
Methamphetamine	20,771	33,440	47,684	40,998	53,560	55,745
Total	615,977	698,450	727,557	722,263	717,823	731,416

Utah Department of Health and Human Services (1999). *Table 2.1 Admissions by primary substance of abuse: TEDS 1993-1998 Number and percent distribution: Treatment episode data set (TEDS): 1993 - 1998.* Retrieved May 25, 2001 from <http://www.dasis.samhsa.gov/teds98/teds98.htm>

Figure M.2 Nationwide Treatment Admissions Trends, by Year (1993 to 1998)

