

EMPLOYMENT AND POVERTY STATISTICS

2001 Community Assessment – Section 3

- **Utah County experienced a decline in the percentage of residents living at or below the poverty rate.**

The 2001 federal poverty guideline states that a family of four making less than \$17,601 annually is living in poverty. The percentage of those in Utah County living at or below the poverty rate has declined from 13.2% in 1993 to 10.3% in 1997. Although the percentage of those living in poverty has decreased, an estimated 34,817 Utah County residents are still living in poverty (see figures A and C).

- **Utah County has a slightly higher percentage of those living in poverty than the state.**

Utah County's estimated poverty rate for 1997 is 10.3%, while the state's estimated poverty rate is 10.0% (see Figure A). As a state, Utah's poverty rate is the second lowest in the nation. Overall, the United States' poverty rate declined over the last ten years. This trend is manifest in declines both in the state and in Utah County (see Figure B).

- **The estimated percentage of residents under 18 years of age living in poverty in Utah County has increased 1.3% from 1993 to 1997.**

This slight increase is significant because the poverty rate for this age group has been on the decline since 1989 (see Figure C).

- **Utah County's unemployment rate is among the lowest in the state.**

According to the August 2001 Seasonally Adjusted Unemployment Rates from the Department of Workforce Services, Utah County is tied for the second lowest unemployment rate in the state (see figures D.1 and D.2).

Utah County's unemployment rate follows Utah's unemployment trend. Utah County has an amazingly low unemployment rate compared to that of the state and the nation (see figures E.1 and E.2).

- **The average monthly wage for Utah County has increased, but is still below almost all other northern urban counties in the state of Utah.**

Utah County's monthly wage has increased from \$1,847 a month in 1996 to \$2,216 a month in 2000 (see figures F.1 and F.2). In 2000, Salt Lake County had the highest average monthly wage with \$2,661 per month.

- **Income continues to be lower in Utah County than in comparable counties in Utah.**

Utah County consistently has lower per capita personal income, median household income, average household income and monthly wages than Davis County, Salt Lake County and Weber County (see figures F.1, F.2, G.1, G.2, H, I, and J.1).

Out of Utah County cities, Provo City has the lowest average household income with \$35,664 per year (see Figure J.2).

- **Utah’s median household income is lower than the national average, while per capita income is higher than the national average.**

A discrepancy exists because per capita income doesn’t account for the large household size in Utah. Utah’s average household size, 3.13, is much larger than the national average household size of 2.59. For this same reason, Utah County has a higher median household income than the state of Utah and the nation. Utah County’s median household size is 3.59 (see Figure K and Section 2: Figure L.1).

- **Utah County wages are 7% below the state of Utah and 24% below the national average.**

Utah County wages are the furthest behind the state of Utah’s wages in mining (47% below), finance/insurance/real estate (21% below), and retail trade (18% below). The only industry in which Utah County’s wages exceed the state average is in services, which are 6% above (see figures L.1 to L.4).

Figure A Poverty Estimate (1997)

	Total in Poverty		Under 18 Years Old		Median Household Income
	Number	Percentage	Number	Percentage	
Utah County	34,817	10.30%	13,580	11.30%	\$41,509
Salt Lake County	77,360	9.10%	32,501	11.70%	\$44,118
Weber County	19,883	10.80%	8,742	14.90%	\$42,764
Davis County	15,666	6.60%	6,918	7.90%	\$48,690
State of Utah	210,783	10.00%	89,867	12.50%	\$38,884
United States	35,573,858	13.30%	14,113,067	19.90%	\$37,005

Note: The results of the 1997 estimate were released November 2000.

United States Census Bureau (2001). *Tables for states and counties by income year and statistic: Small Area Income and Poverty Estimates.* Retrieved July 30, 2001 from <http://www.census.gov/hhes/www/saipc/stcty/estimate.html>

Figure B **Percent of People in Poverty (1997 to 1999)**

	1997-99 Average	1998-99 Average	1997-98 Average
State of Utah	7.90%	7.30%	8.90%
United States	12.60%	12.30%	13.00%

United States Census Bureau(2000). *Table C: Percent of persons in poverty, by state: 1997, 1998, 1999: Poverty 1999*. Retrieved July 30, 2001 from <http://www.census.gov/hhes/poverty/poverty99/pv99state.html>

Figure C Utah County Poverty Estimates Over Time (1989 to 1997)

Year	Total in Poverty		Under 18 Years Old		Median Household Income
	Number	Percentage	Number	Percentage	
1989	39,182	15.10%	17,648	17.40%	\$27,318
1993	38,825	13.00%	15,553	13.80%	\$32,668
1995	34,420	10.80%	11,517	10.00%	\$39,285
1997	34,817	10.30%	13,580	11.30%	\$41,509

United States Census Bureau (2001). *Tables for states and counties by income year and statistic: Small Area Income and Poverty Estimates*. Retrieved July 30, 2001 from <http://www.census.gov/hhes/www/saipe/stcty/estimate.html>

Figure D.1 Seasonally Adjusted Unemployment Rates by County (2001)

Area	August 2001(f)	July 2001(p)	June 2001(r)	August 2000(r)
Beaver County	4.0	3.8	3.4	3.5
Box Elder County	4.6	4.6	4.3	4.2
Cache County	2.5	3.0	2.7	2.5
Carbon County	5.4	6.1	5.2	6.4
Daggett County	4.2	4.4	3.3	2.6
Davis County	3.2	3.3	3.2	2.9
Duchesne County	4.9	5.2	4.4	5.3
Emery County	8.8	9.8	8.3	6.6
Garfield County	8.5	8.4	7.9	8.3
Grand County	6.7	6.5	5.6	6.7
Iron County	4.0	4.0	4.0	2.9
Juab County	4.7	4.6	4.5	3.5
Kane County	3.4	3.1	2.6	3.3
Millard County	3.9	3.9	3.5	4.2
Morgan County	3.5	2.6	2.5	3.4
Piute County	6.7	7.1	7.9	4.2
Rich County	2.5	2.5	2.6	3.0
Salt Lake County	3.9	4.0	3.6	2.9
San Juan County	9.0	7.2	7.1	9.0
Sanpete County	5.3	5.4	5.0	4.7
Sevier County	3.6	4.4	4.1	3.5
Summit County	4.8	5.0	4.6	4.2
Tooele County	6.7	6.1	6.4	4.9
Uintah County	3.8	4.2	3.0	4.7
Utah County	3.4	3.5	3.1	2.6
Wasatch County	4.5	4.6	4.3	4.4
Washington County	3.1	3.2	3.0	3.1
Wayne County	4.7	4.4	4.5	4.8
Weber County	4.3	4.2	4.2	4.3
State Total	3.8	3.9	3.6	3.2

Note: f=forecast p=preliminary r=revised

Utah Department of Workforce Services (2001). *Utah employment situation: September 2001*: DWS News. Retrieved September 20, 2001 from <http://wi.dws.state.ut.us/Press/2001Press/ratecurrent.asp>

Figure D.2 Utah County Unemployment Rates by Year (1980 to 2000)

Year	Labor Force	Employed	Unemployed	Unemployment Rate
1980	82,150	76,245	5,905	7.2
1981	82,561	77,063	5,498	6.7
1982	86,162	78,820	7,342	8.5
1983	87,421	79,142	8,279	9.5
1984	89,677	83,508	6,169	6.9
1985	93,431	87,335	6,096	6.5
1986	97,629	91,479	6,150	6.3
1987	99,684	92,811	6,873	6.9
1988	104,688	100,205	4,483	4.3
1989	111,060	106,317	4,743	4.3
1990	116,361	111,077	5,284	4.5
1991	122,061	116,151	5,910	4.8
1992	123,938	118,518	5,420	4.4
1993	132,817	128,200	4,617	3.5
1994	143,381	138,767	4,614	3.2
1995	142,349	138,207	4,142	2.9
1996	147,605	143,278	4,327	2.9
1997	153,912	149,924	3,988	2.6
1998	159,751	154,740	5,011	3.1
1999	164,930	159,765	5,165	3.1
2000	169,890	165,502	4,388	2.6

Utah Department of Workforce Services (2001). *Yearly, 1980 - 2000, unemployment rates:*
Utah County, Utah. Retrieved August 22, 2001 from
<http://test.wi.dws.state.ut.us/Regions/mountainland/utah/utah2.asp>

Figure E.1 Unemployment Rates (1996 to 2000)

Year	Utah County	State of Utah	United States
1996			
Percentage	2.90%	3.50%	5.40%
Number	4,328	35,200	7,236,000
1997			
Percentage	2.60%	3.10%	4.90%
Number	3,988	32,300	6,739,000
1998			
Percentage	3.10%	3.80%	4.50%
Number	4,984	39,900	6,210,000
1999			
Percentage	3.10%	3.70%	4.20%
Number	5,165	40,500	5,880,000
2000			
Percentage	2.60%	3.40%	4.00%
Number	4,389	37,000	5,665,000

United States Bureau of Labor Statistics (2001). *Employment status of the civilian noninstitutional population, 1938 to date*: Employment Status. Retrieved June 19, 2001 from <http://stats.bls.gov/cps/cpsaatab.htm>

Utah Department of Workforce Services (2001). *Utah fact sheet*: Utah Statewide Information. Retrieved June 19, 2001 from <http://wi.dws.state.ut.us/State.asp>

Utah Department of Workforce Services (2001). *Utah county fact sheet*: Utah County, Utah. Retrieved June 19, 2001 from <http://wi.dws.state.ut.us/Regions/mountainland/utah/utah2.asp>

Figure E.2 Unemployment Rate Trends (1996 to 2000)

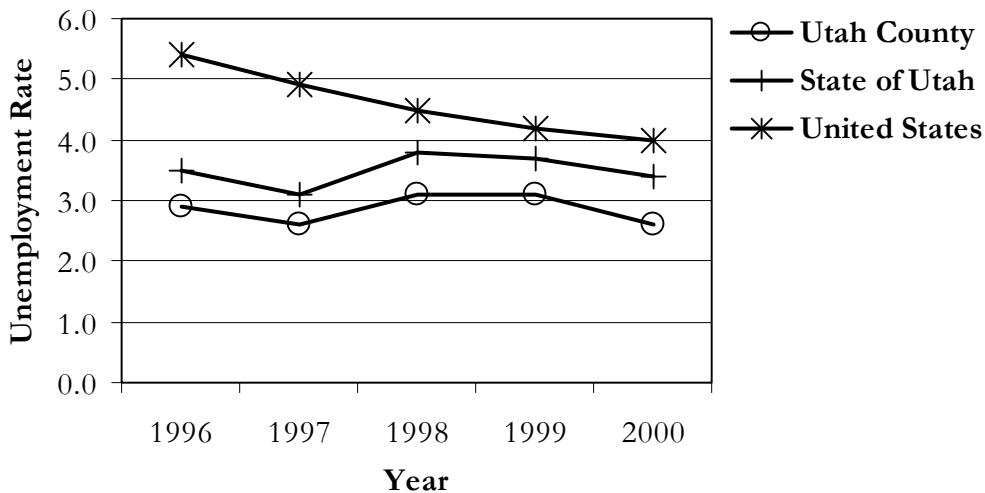


Figure F.1 Average Monthly Wages (1996 to 2000)

Area	2000	1999	1998	1997	1996
Davis County	\$2,292	\$2,155	\$2,087	\$2,002	\$1,979
Salt Lake County	\$2,661	\$2,533	\$2,433	\$2,331	\$2,198
Utah County	\$2,216	\$2,102	\$2,000	\$1,907	\$1,847
Weber County	\$2,208	\$2,153	\$2,077	\$1,979	\$1,889
State of Utah	\$2,401	\$2,291	\$2,207	\$2,114	\$2,016

Utah Department of Workforce Services (2000). *Utah county average monthly wage* [Electronic Format]: Economic Newsletter, Second Half 2000, 8. Retrieved June 19, 2001 from <http://wi.dws.state.ut.us/Regions/mountainland/utah/utah2.asp>
 Austin Sargent (2001). Utah Department of Workforce Services. Personal Communication, June 26, 2001.

Figure F.2 Average Monthly Wage Trends (1996 to 2000)

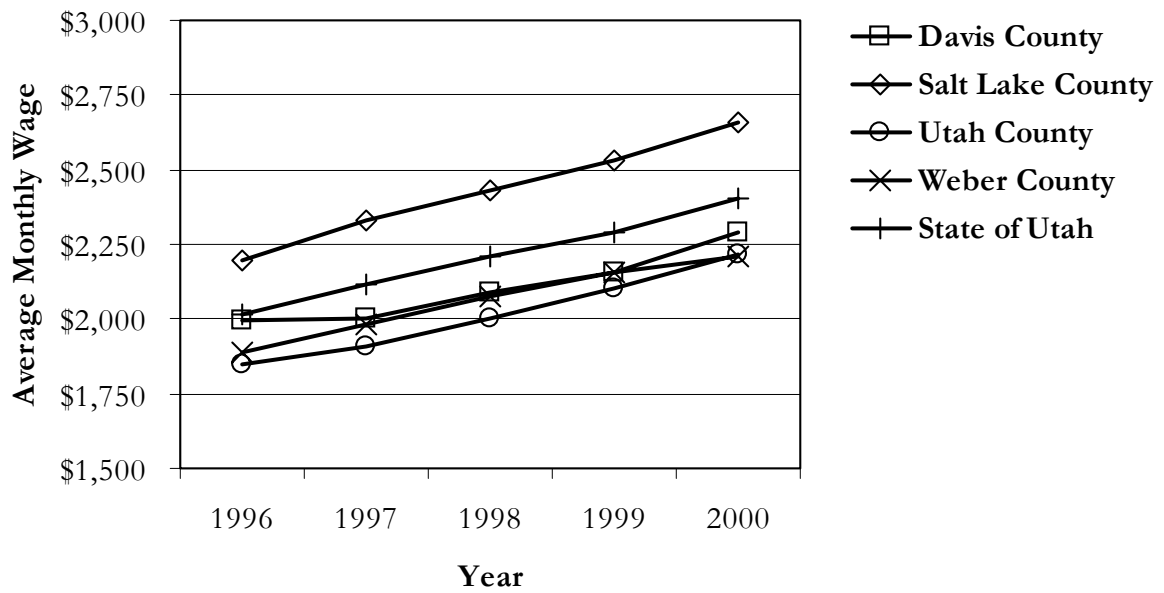


Figure G.1 Per Capita Income (1996 to 2000)

Area	2000	1999	1998	1997	1996
Davis County	\$24,400	\$21,900	\$21,603	\$20,668	\$19,320
Salt Lake County	\$28,100	\$27,700	\$26,100	\$24,679	\$23,108
Utah County	\$19,600	\$17,500	\$16,567	\$15,996	\$15,664
Weber County	\$22,400	\$23,300	\$22,178	\$21,229	\$20,244
State of Utah	\$23,907	\$23,288	\$22,294	\$21,156	\$19,995
United States	\$29,676	\$28,542	\$27,322	\$25,874	\$24,651

Verma, N., Mangum, G., and Cookson, C. (2000). *Per capita income in utah by district & county*
 [Electronic Format]: Poverty in Utah 2000. Salt Lake City, Utah: Utah Issues. Retrieved June 19, 2001
 from [http://www.xmission.com/~ ui/](http://www.xmission.com/~ui/)
 Utah Department of Workforce Services (2001). *Utah's total personal and per capita income in 2000*.
 Retrieved August 28, 2001 from
<http://wi.dws.state.ut.us/pubs/income/personincome.asp>

Figure G.2 Per Capita Income Trends (1996 to 2000)

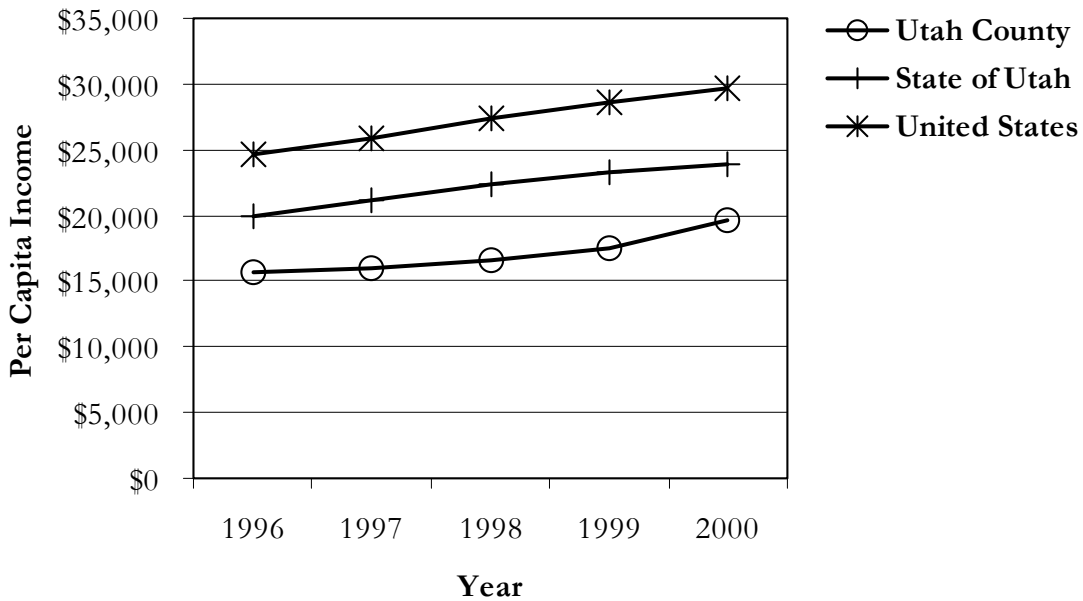


Figure H Per Capita Personal Income by County (1990 and 2000)

Area	1990	2000(f)	Rank by 2000		Rank by Percentage Change
			Per Capita Income	Percentage Change	
Beaver County	\$12,488	\$19,000	14	52.1%	13
Box Elder County	\$15,218	\$22,400	5	47.2%	15
Cache County	\$13,259	\$18,900	15	42.5%	17
Carbon County	\$14,518	\$21,300	9	46.7%	16
Daggett County	\$13,253	\$14,700	28	10.9%	29
Davis County	\$14,994	\$24,400	4	62.7%	7
Duchesne County	\$12,201	\$18,200	16	49.2%	14
Emery County	\$12,311	\$17,300	23	40.5%	19
Garfield County	\$12,436	\$17,500	20	40.7%	18
Grand County	\$12,556	\$19,400	13	54.5%	11
Iron County	\$11,951	\$16,400	25	37.2%	24
Juab County	\$11,674	\$16,000	26	37.1%	25
Kane County	\$13,288	\$25,600	3	92.7%	1
Millard County	\$13,493	\$17,500	19	29.7%	27
Morgan County	\$13,676	\$21,800	8	59.4%	9
Piute County	\$10,796	\$16,600	24	53.8%	12
Rich County	\$12,369	\$17,300	22	39.9%	21
Salt Lake County	\$16,681	\$28,100	2	68.5%	4
San Juan County	\$8,761	\$12,300	29	40.4%	20
Sanpete County	\$11,389	\$14,800	27	29.9%	26
Sevier County	\$12,446	\$17,400	21	39.8%	22
Summit County	\$23,297	\$43,200	1	85.4%	2
Tooele County	\$14,889	\$17,600	18	18.2%	28
Uintah County	\$11,213	\$17,900	17	59.6%	8
Utah County	\$12,043	\$19,600	11	62.8%	6
Wasatch County	\$13,340	\$22,100	7	65.7%	5
Washington County	\$12,584	\$19,600	12	55.8%	10
Wayne County	\$10,789	\$19,900	10	84.4%	3
Weber County	\$16,151	\$22,400	6	38.7%	23
State of Utah	\$14,996	\$23,907	-	59.4%	-
United States	\$19,584	\$29,676	-	51.5%	-

Note: (f) = forecasted 2000 Per Capita Personal Income

Utah Governor's Office on Planning and Budget (2001). *Per capita personal income by county, 1990 and 2000: Per Capita Personal Income - 2000*. Retrieved July 18, 2001 from <http://www.governor.state.ut.us/dea/Rankings/Counties/counties.html>

Figure I Median Household Income (1997 to 1999)

Area	1999	1998	1997	1995	1993	1989
Davis County	-	-	\$48,690	\$42,861	\$42,041	\$35,108
Salt Lake County	-	-	\$44,118	\$40,420	\$37,085	\$30,149
Utah County	-	-	\$41,509	\$39,285	\$32,668	\$27,432
Weber County	-	-	\$42,764	\$40,571	\$36,227	\$30,125
United States	\$40,816	\$39,744	\$37,686	\$37,251	\$36,019	\$38,837
State of Utah	\$46,094	\$45,277	\$44,401	\$39,328	\$41,259	\$41,270

Note: County data for years 1998 and 1999 are not available

United States Census Bureau (2000). *Table H-8: median household income by state, 1984 to 2000: Historical Income Tables - Households*. Retrieved June 19, 2001 from <http://www.census.gov/hhes/income/histinc/h08.html>

United States Census Bureau (2000). *Tables for states and counties by income year and statistic: Small Area Income and Poverty Estimates*. Retrieved July 30, 2001 from <http://www.census.gov/hhes/www/saipe/stcty/estimate.html>

Figure J.1 Average Household Income by County (1999)

County	Total Households	Average Household Income	Rank by Lowest
Beaver County	1,843	\$32,102	4
Box Elder County	13,236	\$44,765	22
Cache County	27,163	\$42,324	19
Carbon County	6,804	\$39,342	17
Daggett County	281	\$35,845	13
Davis County	72,271	\$55,776	28
Duschne County	4,265	\$32,766	6
Emery County	3,388	\$36,983	16
Garfield County	1,552	\$29,727	3
Grand County	3,032	\$35,664	11
Iron County	9,822	\$36,075	14
Juab County	2,243	\$39,381	18
Kane County	2,231	\$32,204	5
Millard County	3,400	\$35,604	10
Morgan County	2,180	\$55,578	27
Piute County	416	\$27,758	1
Rich County	561	\$34,965	7
Salt Lake County	293,635	\$51,706	25
San Juan County	2,527	\$35,445	9
Sanpete County	5,701	\$34,969	8
Sevier County	5,486	\$36,889	15
Summit County	10,479	\$77,713	29
Tooele County	13,190	\$43,801	21
Uintah County	6,960	\$35,773	12
Utah County	99,794	\$48,674	24
Wasatch County	4,436	\$52,698	26
Washington County	25,598	\$42,338	20
Wayne County	824	\$28,494	2
Weber County	66,746	\$46,321	23
State of Utah	729,124	\$50,769	

Utah State Tax Commission (2000). *Household income by county for 1999*:

Federal Return Data 1999. Retrieved August 30, 2001 from

<http://www.tax.ex.state.ut.us/ESU/income/FED99/FED99.HTM>

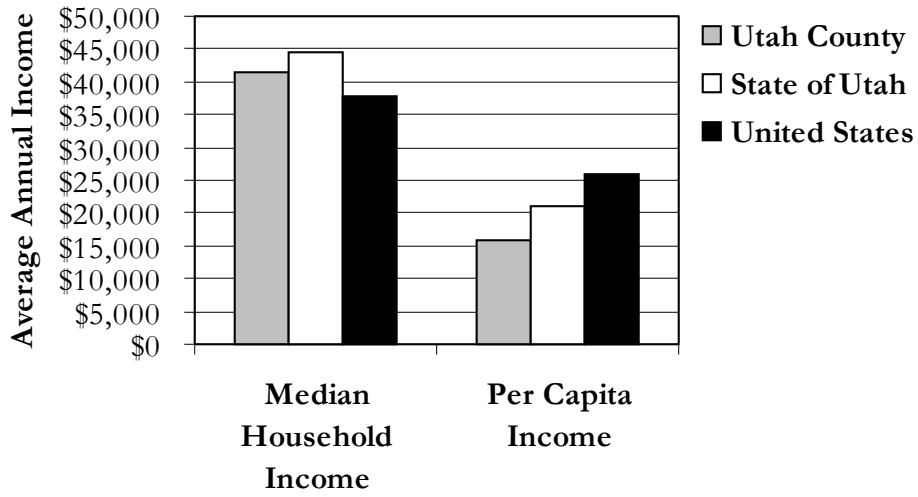
Figure J.2 Average Household Income by City (1999)

City	Total Households	Average Household Income
Alpine	1,613	\$105,559
American Fork	6,337	\$50,364
Highland	1,725	\$83,354
Lehi	5,469	\$51,519
Lindon	1,925	\$75,587
Mapleton	1,464	\$69,759
Orem	23,956	\$49,328
Payson	4,194	\$43,423
Pleasant Grove	6,287	\$51,320
Provo	28,691	\$35,664
Santaquin	1,428	\$38,750
Spanish Fork	6,300	\$50,082
Springville	5,938	\$58,839

Note: Return data are for cities with more than 750 returns

Utah State Tax Commission (2000). *Household income by city for 1999:*
Federal Return Data 1999. Retrieved August 30, 2001 from
<http://www.tax.ex.state.ut.us/ESU/income/FED99/FED99.HTM>

Figure K Median Household Income and Per Capita Income (1997)



Note: See Figure G.1 and Figure I for source data.

Figure L.1 Comparison of Average Annual Wages, County and State (1999)

Industry	Utah County	State of Utah	Total Difference	Percentage Difference
Mining	\$24,600	\$46,100	\$21,500	-47%
Constuction	\$25,100	\$28,400	\$3,300	-12%
Manufacturing	\$30,300	\$33,500	\$3,200	-10%
Trans/Comm/Util	\$34,900	\$36,100	\$1,200	-3%
Wholesale Trade	\$35,400	\$37,500	\$2,100	-6%
Retail Trade	\$13,600	\$16,600	\$3,000	-18%
Finance/Ins/Real Estate	\$27,400	\$34,600	\$7,200	-21%
Services	\$27,300	\$25,700	-\$1,600	6%
Public Administration	\$30,100	\$33,100	\$3,000	-9%
Total	\$25,400	\$27,400	\$2,000	-7%

Utah Department of Community and Economic Development (2000). *Counties/multi-county districts, Utah County: Industry Profile Data*. Retrieved August 28, 2001 from <http://www.dced.state.ut.us/birs/industry/indust.htm>

United States Bureau of Labor Statistics (2000). *Table 4. State and industry average annual pay for 1999 and 2000 and percent change in pay for all covered workers: News*. Retrieved August 29, 2001 from <http://stats.bls.gov/news.release/annpay.t04.htm>

Figure L.2 Comparison of Average Annual Wages, County and Nation (1999)

Industry	Utah County	United States	Total Difference	Percentage Difference
Mining	\$24,600	\$54,653	\$30,053	55%
Constuction	\$25,100	\$34,798	\$9,698	28%
Manufacturing	\$30,300	\$41,918	\$11,618	28%
Trans/Comm/Utilities	\$34,900	\$41,729	\$6,829	16%
Wholesale Trade	\$35,400	\$44,144	\$8,744	20%
Retail Trade	\$13,600	\$17,492	\$3,892	22%
Finance/Ins/Real Estate	\$27,400	\$50,865	\$23,465	46%
Services	\$27,300	\$31,491	\$4,191	13%
Public Administration	\$30,100	\$33,890	\$3,790	11%
Total	\$25,400	\$33,220	\$7,820	24%

Utah Department of Community and Economic Development (2000). *Counties/multi-county districts, Utah County: Industry Profile Data*. Retrieved August 28, 2001 from <http://www.dced.state.ut.us/birs/industry/indust.htm>

United States Bureau of Labor Statistics (2000). *Table 4. State and industry average annual pay for 1999 and 2000 and percent change in pay for all covered workers: News*. Retrieved August 29, 2001 from <http://stats.bls.gov/news.release/annpay.t04.htm>

Figure L.3 Comparison of Annual Average Wages, State and Nation (1999)

Industry	Utah County	United States	Total Difference	Percentage Difference
Mining	\$46,100	\$54,653	\$8,553	16%
Constuction	\$28,400	\$34,798	\$6,398	18%
Manufacturing	\$33,500	\$41,918	\$8,418	20%
Trans/Comm/Util	\$36,100	\$41,729	\$5,629	13%
Wholesale Trade	\$37,500	\$44,144	\$6,644	15%
Retail Trade	\$16,600	\$17,492	\$892	5%
Finance/Ins/Real Estate	\$34,600	\$50,865	\$16,265	32%
Services	\$25,700	\$31,491	\$5,791	18%
Public Administration	\$33,100	\$33,890	\$790	2%
Total	\$27,400	\$33,220	\$5,820	18%

Utah Department of Community and Economic Development (2000). *Counties/multi-county districts, Utah County: Industry Profile Data*. Retrieved August 28, 2001 from <http://www.dced.state.ut.us/birs/industry/indust.htm>

United States Bureau of Labor Statistics (2000). *Table 4. State and industry average annual pay for 1999 and 2000 and percent change in pay for all covered workers: News*. Retrieved August 29, 2001 from <http://stats.bls.gov/news.release/annpay.t04.htm>

Figure L.4 Comparison of Average Annual Wages by Industry

